

Attendance Register System

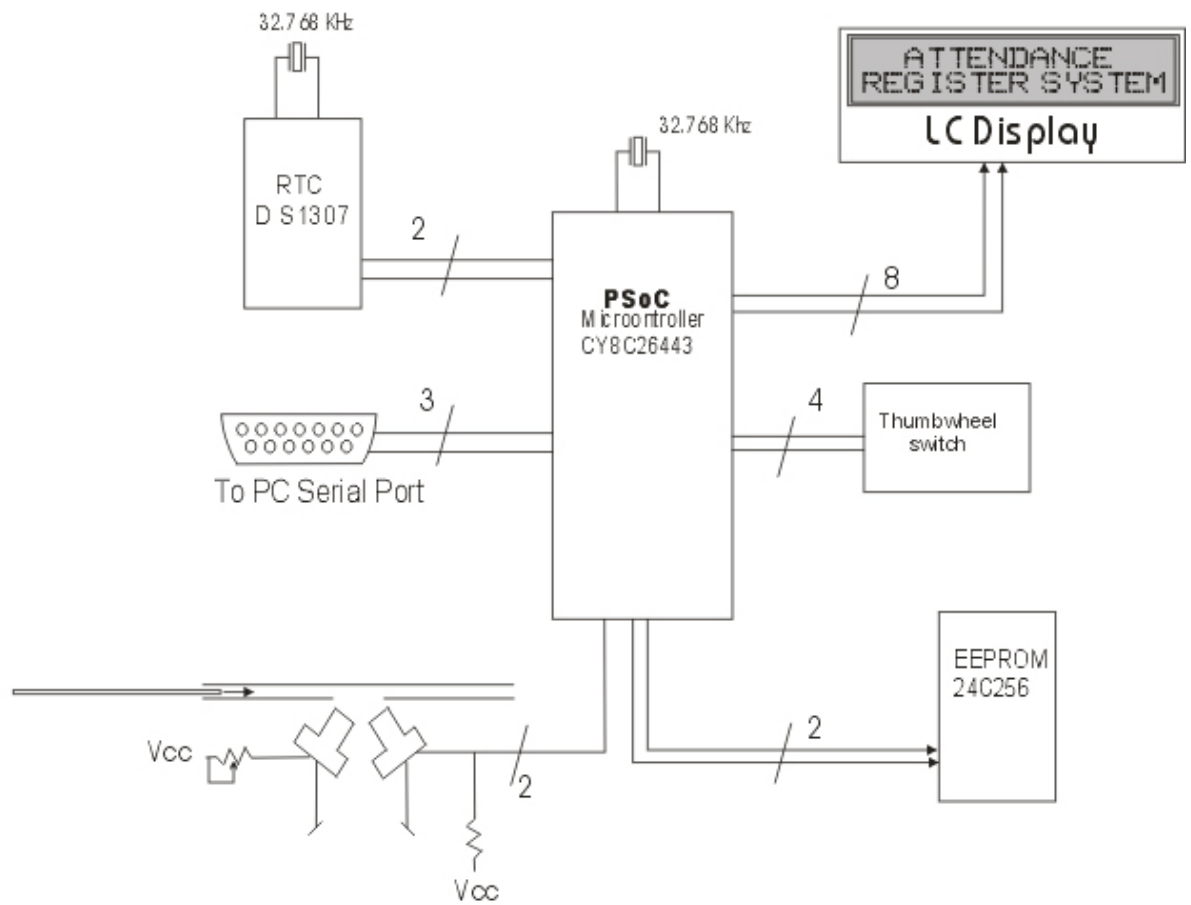
ABSTRACT

The project is meant to revolutionize the way the attendance is recorded and maintained in an office or an educational institute. The project provides user with an entirely automated system, which works right from the time the attendance, is marked and stored in an EEPROM memory to when the attendance is downloaded from EEPROM to PC. Each student/employee is assigned a card on which the students' roll number (employee's enrolment number) will be stored in the form of bar codes. At the time of attendance the student is required to swipe his/her card to the bar code reader. This information along with the time stamp is stored in EEPROM memory. Periodically the system is connected to the PC to download the data from EEPROM to PC i.e. to the databases maintained in the software section. The software part provides the user various utilities to work on the attendance data downloaded. It is the password-protected system, which can take the back up the existing database and restore them. E-mail facility to report the status of attendance is provided. The software can be easily customized according to the need of the user.

An Overview

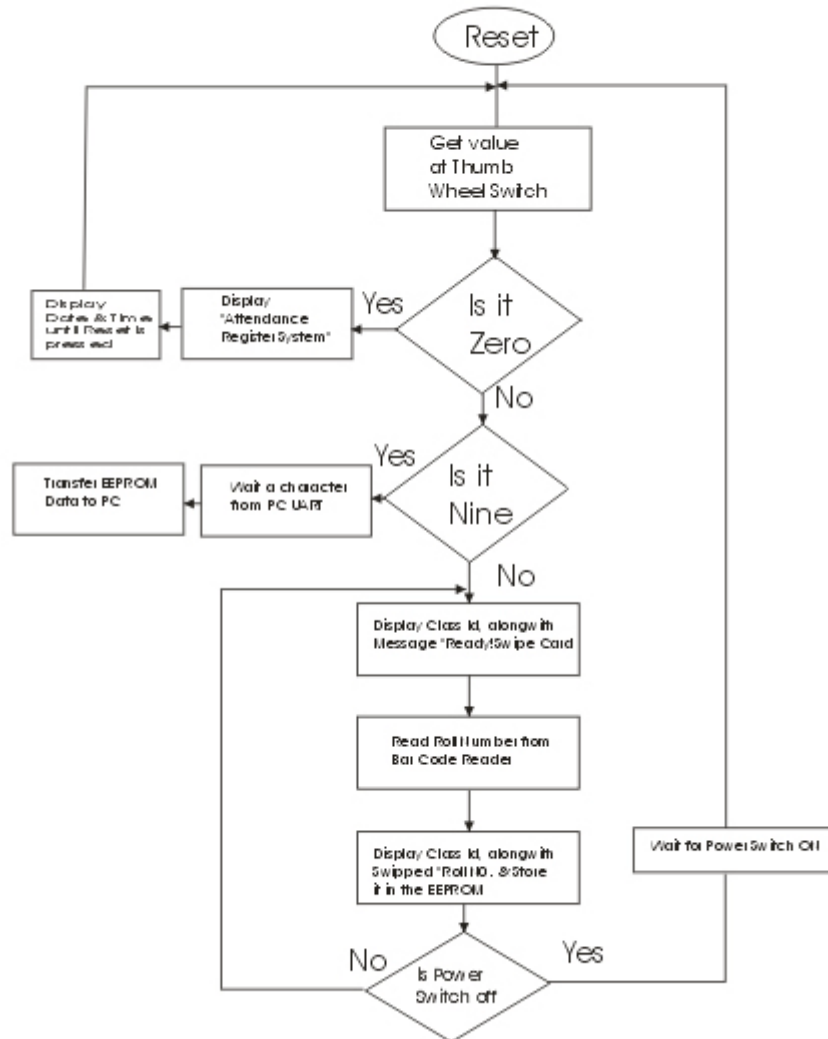
This project, which involves registering attendance of students entering the classroom, will relieve the teacher from taking attendance and maintaining its records. For this, every student will be provided with a card on which student's information will be stored in the form of Bar Codes. This information could be student's Enrolment number or/and class roll number. As the student enters the classroom he/she will swipe his/her card in the Bar Code Reader. The PSoC Microcontroller, will decode the roll number, which is printed in the form of bar code and store it in serial EEPROM memory (24C256) chip along with time stamp, taken from the Real Time Clock. Depending on the number of students in a class, the PSoC Microcontroller will be connected to the computer periodically through its COM2 serial port and the information stored in EEPROM chip, will be transferred to the computer.

Overview of Embedded hardware

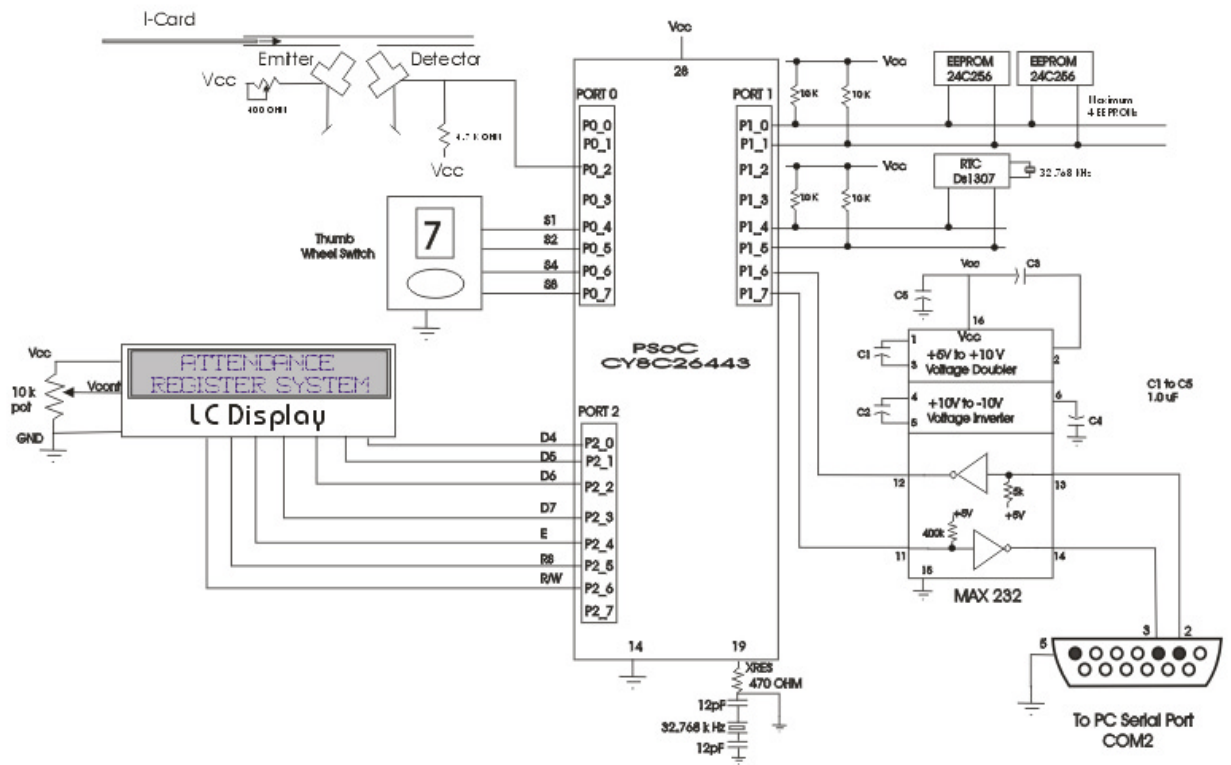


BLOCK DIAGRAM OF ATTENDANCE RECORDING DEVICE

Flow Chart for the program running in Microcontroller



Schematic Diagram



Schematic Diagram of Attendance Register System

